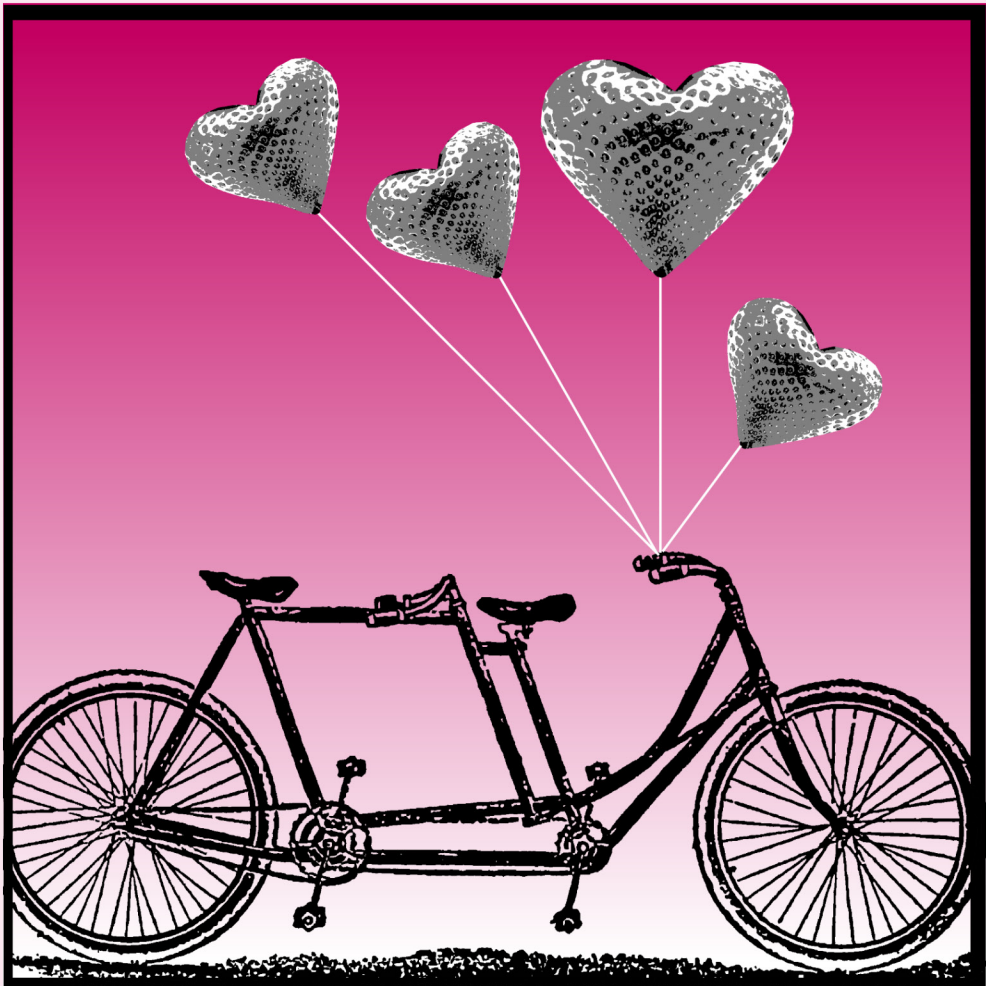


# Strawberry Kisses

## From "No Bridges: Vashon Suite"



For SATB Choir and Piano

**Words & Music by Bronwyn Edwards**

*Commissioned by the Vashon Island Chorale | Dr. Gary D. Cannon, Artistic Director  
Celebrating the Vashon Island Chorale's 25th Anniversary, 2014*

# Strawberry Kisses

From "No Bridges: Vashon Suite"

Commissioned by the Vashon Island Chorale, Dr. Gary D. Cannon, Artistic Director

Celebrating the Vashon Island Chorale's 25th Anniversary, 2014

For SATB Choir and Piano

Lyrics & music by  
Bronwyn Edwards

1 *Lively* ♩ = 142 *mf* *mp*

Soprano  
Alto  
Tenor  
Bass  
Piano

Good morn - ing! It's a beau - ti - ful  
Good morn - ing! It's a beau - ti - ful  
Good morn - ing!  
Good morn - ing!

4 SOPRANO

ALTO

sum - mer's day, what a day to re-vel out - side!  
sum - mer's day, what a day to re-vel out - side!

7

What a per - fect - ly love - ly day to en - joy a bi - cy - cle

What a per - fect - ly love - ly day to en - joy a bi - cy - cle

10

*mf*

ride! We'll go to - ge - ther in tan - dem, Pe - dal wher - e - ver we fan - cy

ride! We'll go to - ge - ther in tan - dem, Pe - dal wher - e - ver we fan - cy

13

I'm in the mood for san - gri - a and just a lit - tle ro - mance!

I'm in the mood for san - gri - a and just a lit - tle ro - mance!

16 TENOR

*mp*

8

BASS

*mf.*

Beach - es scat - tered with spark - ling jew'ls, how I

Beach - es scat - tered with spark - ling jew'ls, how I

Detailed description: This system contains measures 16, 17, and 18. It features three staves: a Tenor vocal line (top), a Bass vocal line (middle), and a piano accompaniment (bottom). The Tenor line starts with a rest in measure 16, then sings 'Beach - es scat - tered with spark - ling jew'ls, how I' in measures 17 and 18. The Bass line also starts with a rest in measure 16, then sings the same lyrics in measures 17 and 18. The piano accompaniment consists of a rhythmic pattern of eighth notes in the right hand and a bass line in the left hand. Dynamics are marked *mp* for the Tenor and *mf.* for the Bass.

19

8

love the blue in your eyes Let's go pad - dle in

love the blue in your eyes Let's go pad - dle in

Detailed description: This system contains measures 19, 20, and 21. It features three staves: a Tenor vocal line (top), a Bass vocal line (middle), and a piano accompaniment (bottom). The Tenor line sings 'love the blue in your eyes' in measure 19, has a rest in measure 20, and sings 'Let's go pad - dle in' in measure 21. The Bass line also sings 'love the blue in your eyes' in measure 19, has a rest in measure 20, and sings 'Let's go pad - dle in' in measure 21. The piano accompaniment continues with the same rhythmic pattern as in the previous system.

22

8

ti - dal pools, while a he - ron gra - ces the sky!

ti - dal pools, while a he - ron gra - ces the sky!

Detailed description: This system contains measures 22, 23, and 24. It features three staves: a Tenor vocal line (top), a Bass vocal line (middle), and a piano accompaniment (bottom). The Tenor line sings 'ti - dal pools, while a he - ron gra - ces the sky!' in measure 22, has a rest in measure 23, and continues the phrase in measure 24. The Bass line also sings 'ti - dal pools, while a he - ron gra - ces the sky!' in measure 22, has a rest in measure 23, and continues the phrase in measure 24. The piano accompaniment continues with the same rhythmic pattern.

25

*mf*

Wild-flow-ers lov-ing the sun-shine wave as we go on our way, Look for a glen in the shade and

Wild-flow-ers lov-ing the sun-shine wave as we go on our way, Look for a glen in the shade and

28

watch all the boats in the bay!

watch all the boats in the bay!

31

S *mf*

Oh, what won-der-ful bliss, your straw-ber-ry kiss, sweet ber-ry de -

A *mf* Oh, what won-der-ful bliss, your straw-ber-ry kiss, de -

T *mf* Oh, what won-der-ful bliss, your straw-ber-ry kiss, de -

B *mf* Oh, what won-der-ful bliss, your straw-ber-ry kiss, de -

Oh, what won-der-ful bliss, your straw-ber-ry kiss, sweet ber-ry de -

*mf*